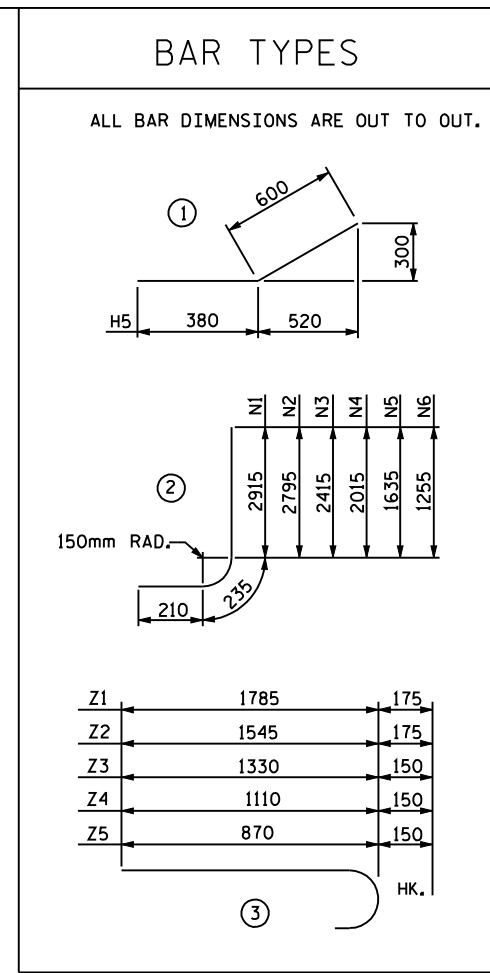


PLAN



BAR TYPES

ALL BAR DIMENSIONS ARE OUT TO OUT.

BILL OF MATERIAL

BAR NO.	SIZE	TYPE	LENGTH	WEIGHT	
H1	24	13	STR	3740	89
H2	8	13	STR	2960	24
H3	8	13	STR	1900	15
H4	8	13	STR	860	7
H5	56	13	1	980	55
H6	8	13	STR	4060	32
N1	8	19	2	3360	60
N2	4	19	2	3240	29
N3	12	19	2	2860	77
N4	12	16	2	2460	46
N5	12	13	2	2080	25
N6	12	13	2	1700	20
S1	12	19	STR	1800	48
T1	12	16	STR	4300	80
V1	8	13	STR	2740	22
V2	4	13	STR	2620	10
V3	12	13	STR	2240	27
V4	12	13	STR	1840	22
V5	12	13	STR	1460	17
V6	12	13	STR	1080	13
Z1	12	16	3	1960	37
Z2	12	16	3	1720	32
Z3	12	13	3	1480	18
Z4	12	13	3	1260	15
Z5	12	13	3	1020	12

REINFORCING STEEL  
 FOR 4 WINGS 832 kg

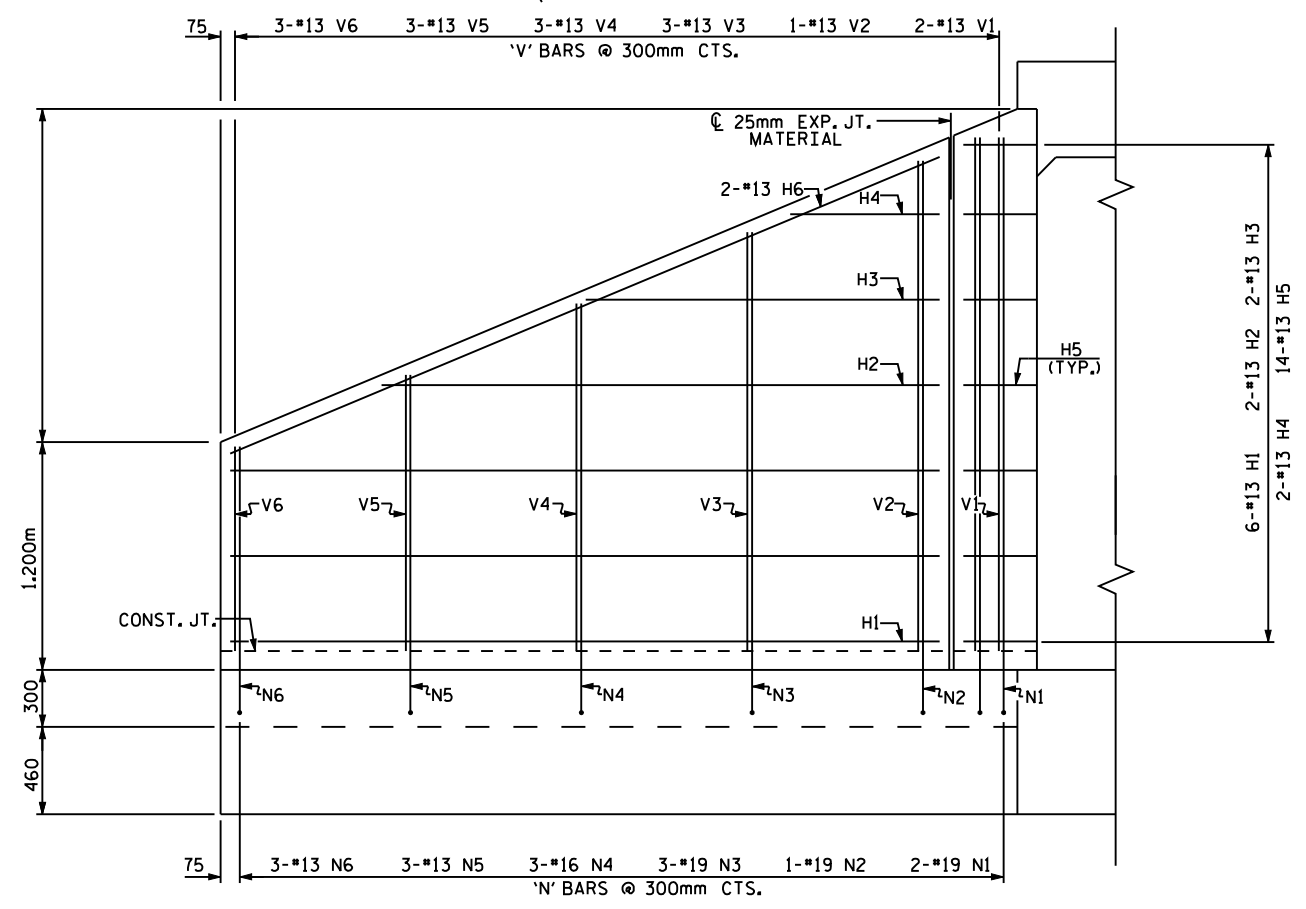
CLASS A CONCRETE

4 WINGS 19.0 m<sup>3</sup>

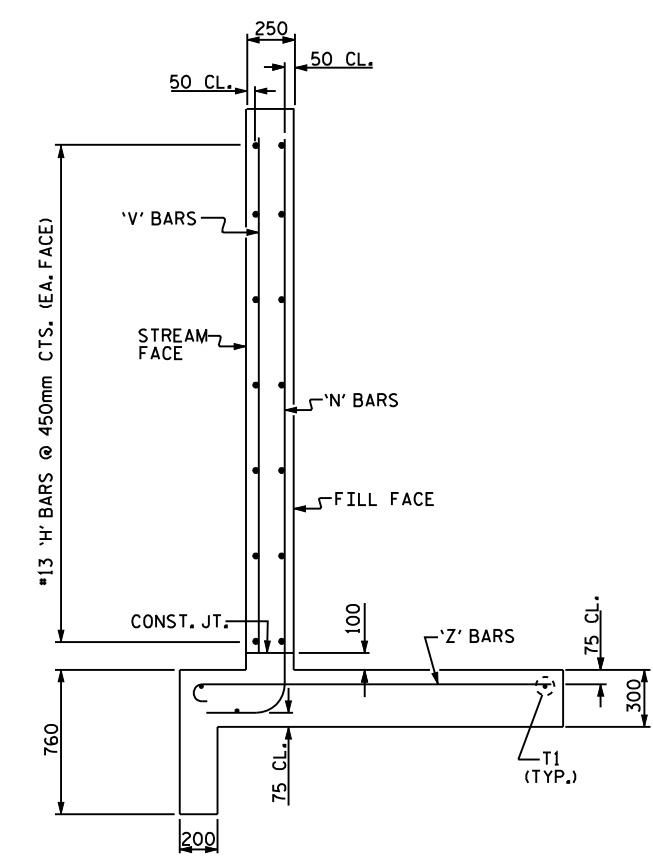
2 HEADWALLS m<sup>3</sup>

2 END CURTAIN WALLS m<sup>3</sup>

TOTAL m<sup>3</sup>



ELEVATION



TYPICAL WING SECTION

PROJECT NO. \_\_\_\_\_  
 \_\_\_\_\_ COUNTY  
 STATION: \_\_\_\_\_  
 SHEET OF \_\_\_\_\_

STATE OF NORTH CAROLINA  
 DEPARTMENT OF TRANSPORTATION  
 RALEIGH  
 STANDARD WINGS  
 FOR  
 CONCRETE BOX CULVERT  
 H = 2.700m SLOPE = 2 : 1  
 90° SKEW

ASSEMBLED BY : \_\_\_\_\_ DATE : \_\_\_\_\_  
 CHECKED BY : \_\_\_\_\_ DATE : \_\_\_\_\_

DRAWN BY : FPP 06/97  
 CHECKED BY : VAP 08/97

REVISIONS				SHEET NO.	
NO.	BY	DATE	NO.	BY	DATE
1			3		
2			4		

TOTAL SHEETS